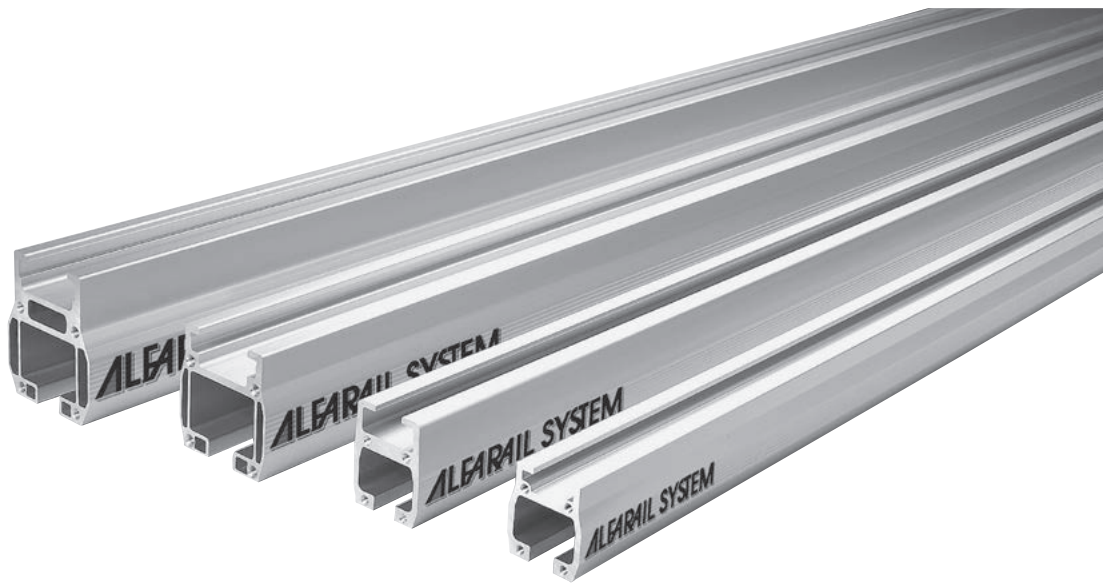
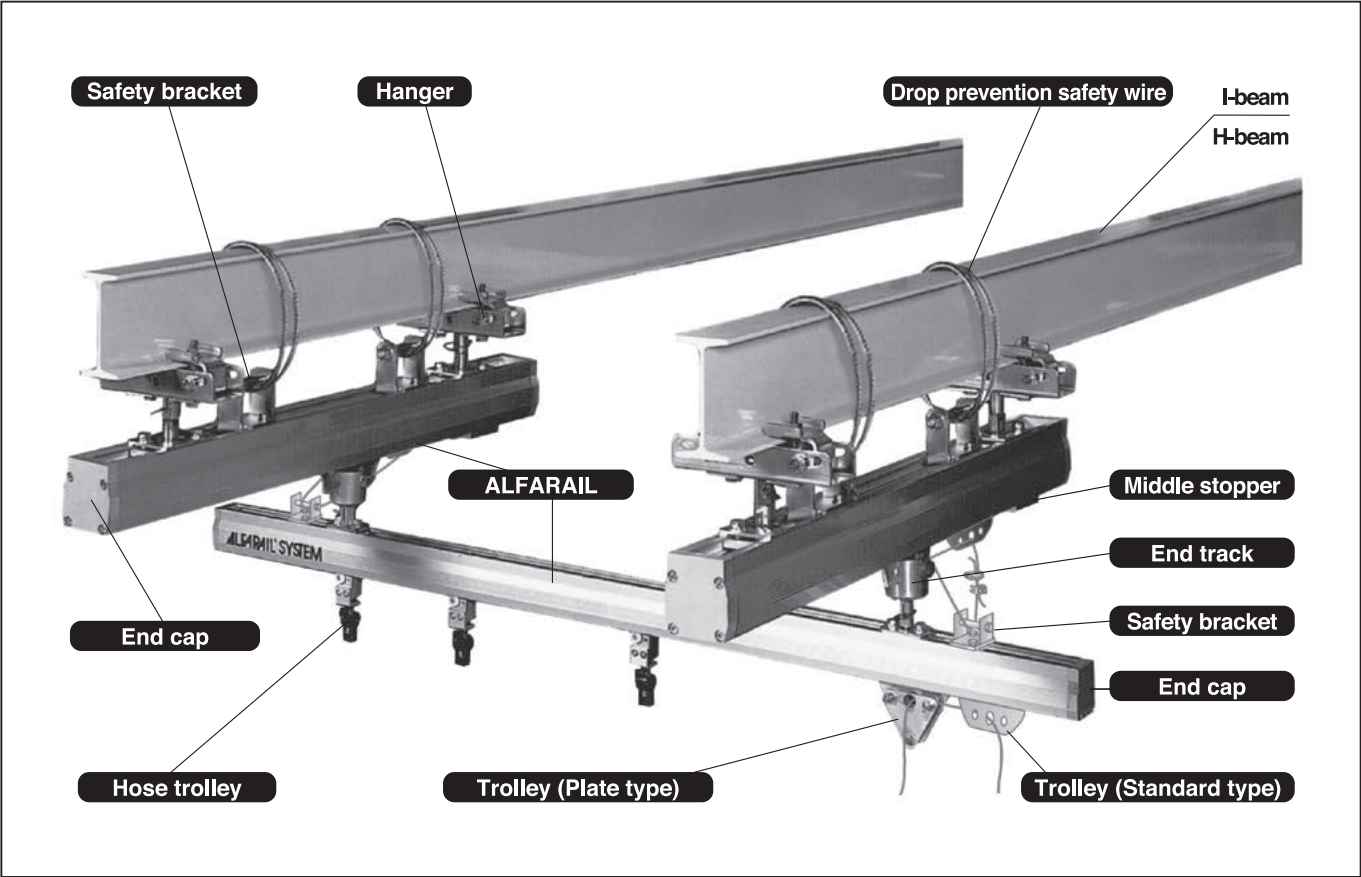


ALFA RAIL SYSTEM®

STANDARD HANGING BRACKET LIST



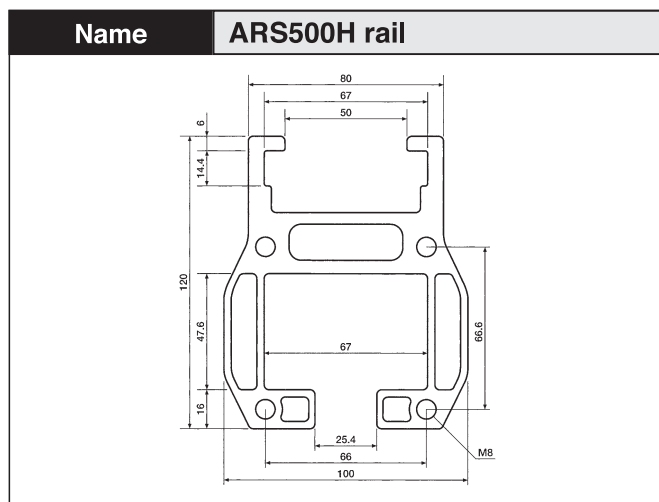


* This photo is only to show the components.
* Do not connect the traverse rails.
* Attach the safety bracket to both ends of each rail.

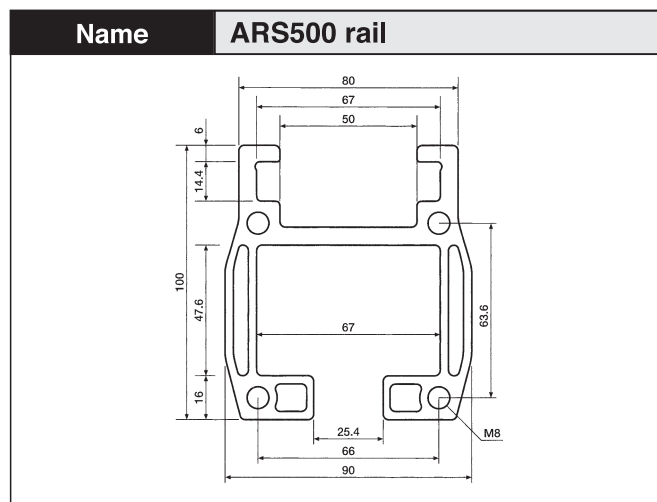
Mechanical properties of A6063S-T5 (205)		
Tensile properties	Tensile strength	225MPa
	Yield Strength	205MPa
	Elongation	8% (1.6mm thick)
Brinell hardness		75 (10/500)
Shear strength		120MPa
Fatigue strength		70MPa (Rotary bending for 5x10 ⁸ , times at 10,000rpm)
Modulus of longitudinal elasticity		68,000MPa

Cut length	
1m	ARS□□□-AR1.□□□
2m	ARS□□□-AR2.□□□
3m	ARS□□□-AR3.□□□
4m	ARS□□□-AR4.□□□
5m	ARS□□□-AR5.□□□
6m	ARS□□□-AR6.□□□

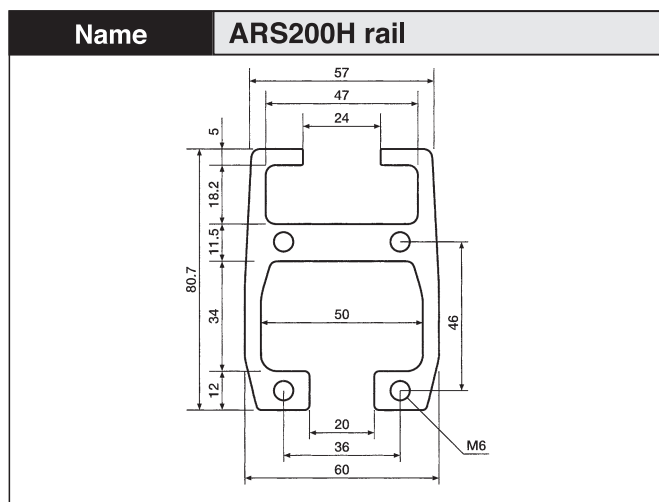
* Write the series name in □□□, and the rail length (m) in AR-□.□□□.



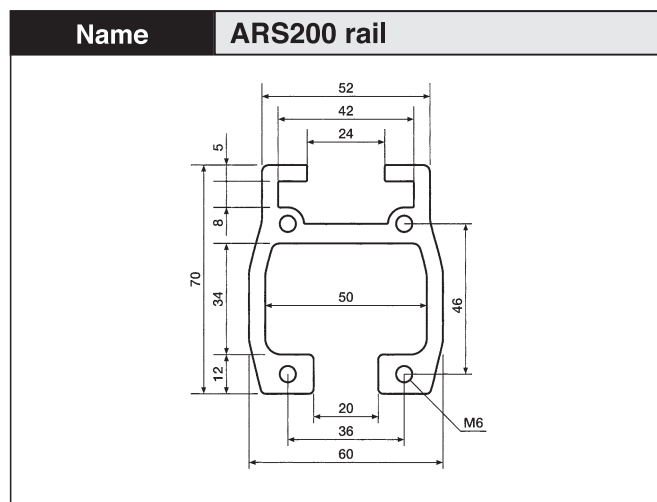
Surface treatment	Alumite (9μ) + Clear coating (7μ)	Material	A6063S-T5 (205)
Geometric moment of inertia	$I_x=383.3 \times 10^4$ $I_y=337.6 \times 10^4$	Unit weight	8.5Kg/m



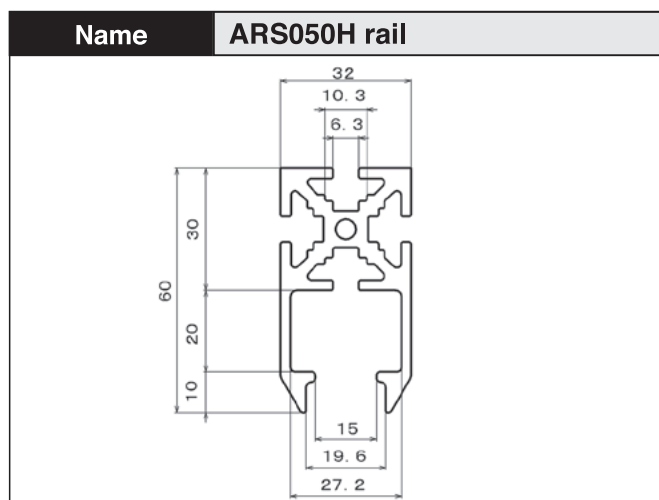
Surface treatment	Alumite (9μ) + Clear coating (7μ)	Material	A6063S-T5 (205)
Geometric moment of inertia	$I_x=223.5 \times 10^4$ $I_y=209.0 \times 10^4$	Unit weight	5.8Kg/m



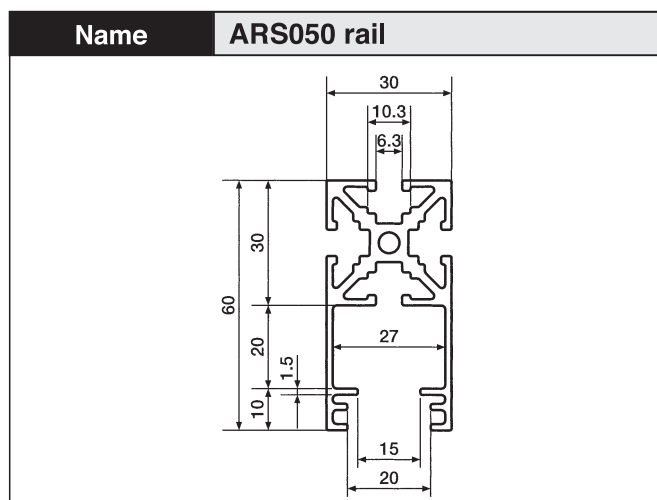
Surface treatment	Alumite (9μ) + Clear coating (7μ)	Material	A6063S-T5 (205)
Geometric moment of inertia	$I_x=99.3 \times 10^4$ $I_y=80.6 \times 10^4$	Unit weight	4.7Kg/m



Surface treatment	Alumite (9μ) + Clear coating (7μ)	Material	A6063S-T5 (205)
Geometric moment of inertia	$I_x=67.1 \times 10^4$ $I_y=61.4 \times 10^4$	Unit weight	3.6Kg/m



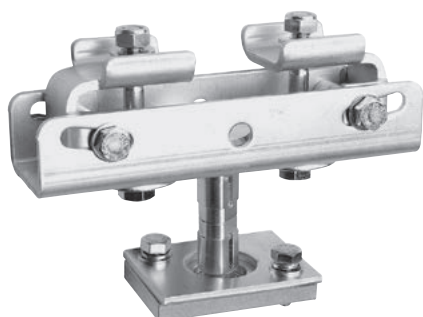
Surface treatment	Alumite (9μ) + Clear coating (7μ)	Material	A6063S-T5 (205)
Geometric moment of inertia	$I_x=19.1 \times 10^4$ $I_y=8.2 \times 10^4$	Unit weight	1.8kg/m



Surface treatment	Alumite (9μ) + Clear coating (7μ)	Material	A6063S-T5 (205)
Geometric moment of inertia	$I_x=14.3 \times 10^4$ $I_y=5.5 \times 10^4$	Unit weight	1.3Kg/m

ARS500 Series

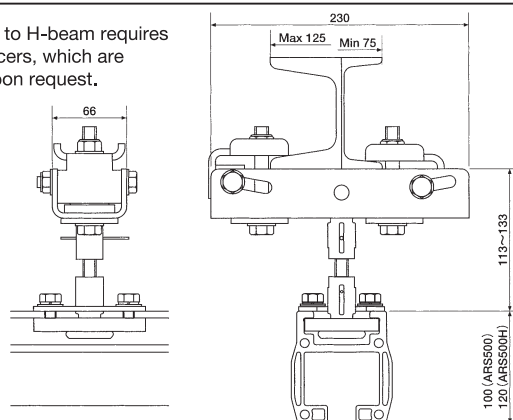
Name Hanger Model **ARS500-HN1**



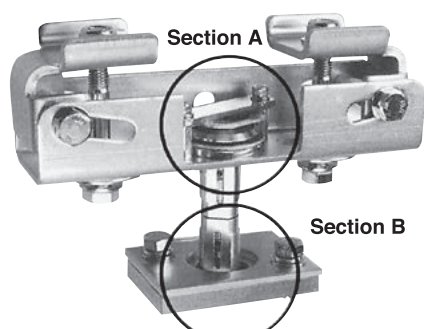
Standard type

Unit weight 3.5Kg

Attachment to H-beam requires hanger spacers, which are available upon request.



Name Hanger Model **ARS500-HN1-F**



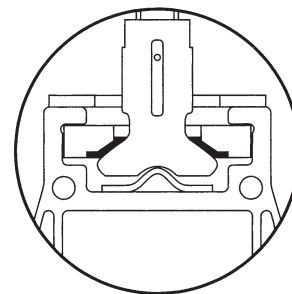
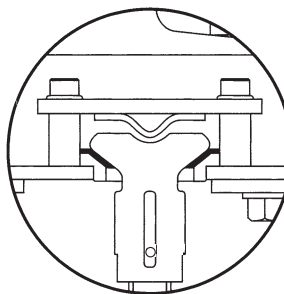
Standard lift-preventive type

Unit weight 3.7Kg

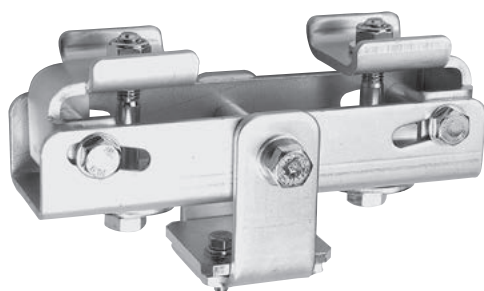
Attachment to H-beam requires hanger spacers, which are available upon request.

Section A

Section B



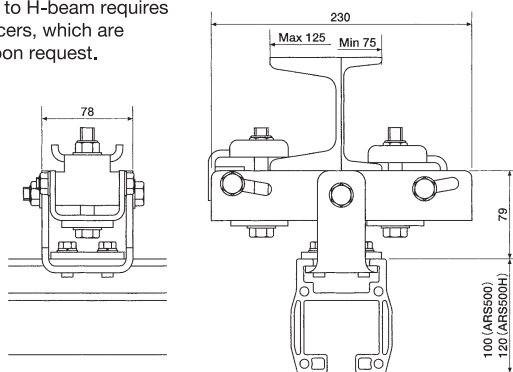
Name Hanger Model **ARS500-HN2**



Parallel type

Unit weight 3.1Kg

Attachment to H-beam requires hanger spacers, which are available upon request.

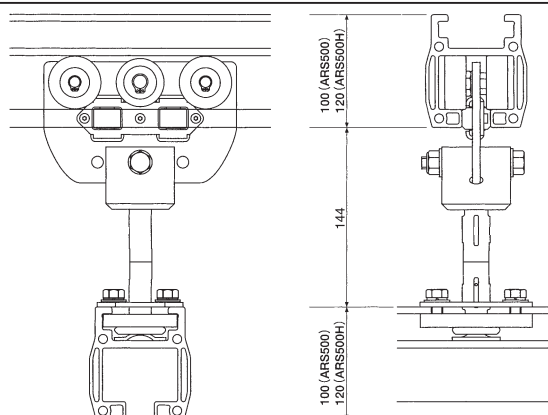


Name End track Model **ARS500-ET4B**

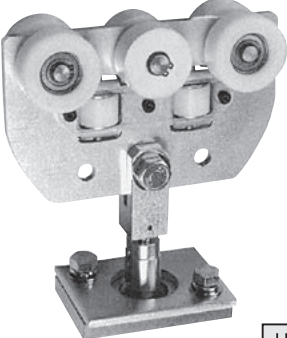


Both-side hinge type

Unit weight 3.1Kg

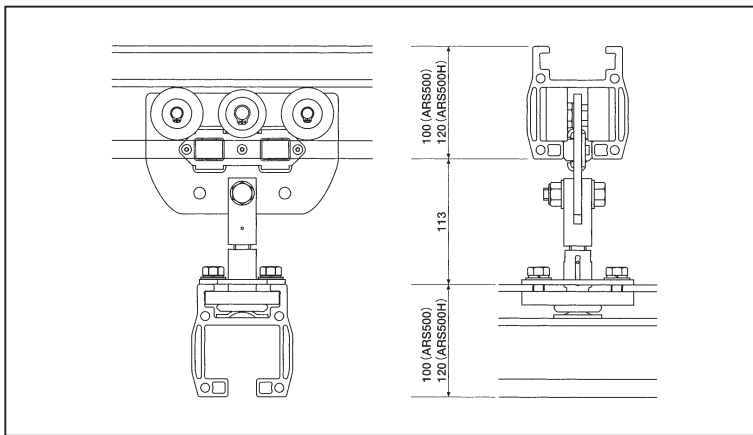


Name	End track	Model	ARS500-ET5A
-------------	-----------	--------------	-------------

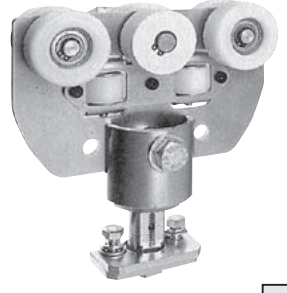


One-side hinge type

Unit weight	2.6Kg
--------------------	-------

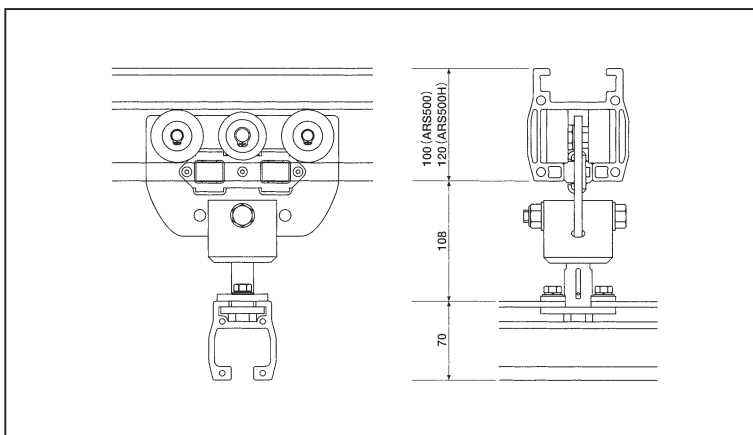


Name	End track	Model	ARS500-ET6A
-------------	-----------	--------------	-------------



500 rail & 200 rail

Unit weight	2.4Kg
--------------------	-------

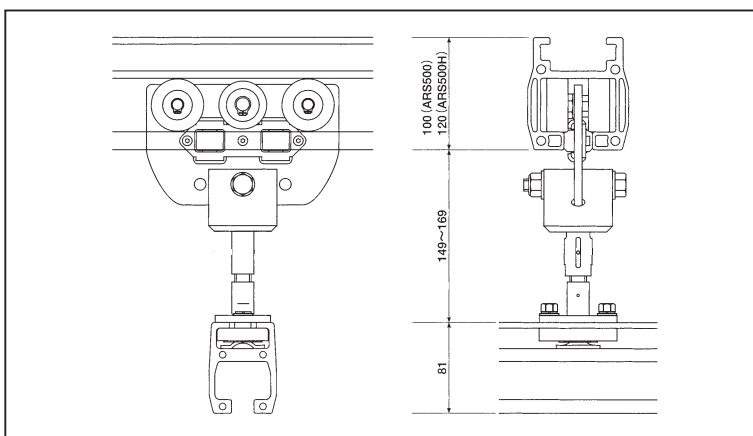


Name	End track	Model	ARS500-ET7A
-------------	-----------	--------------	-------------

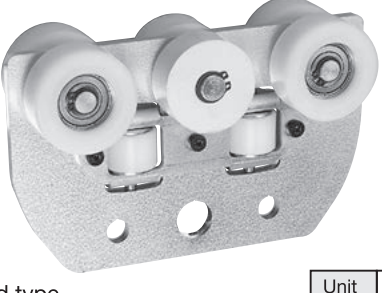


500 rail & 200 rail

Unit weight	2.6Kg
--------------------	-------

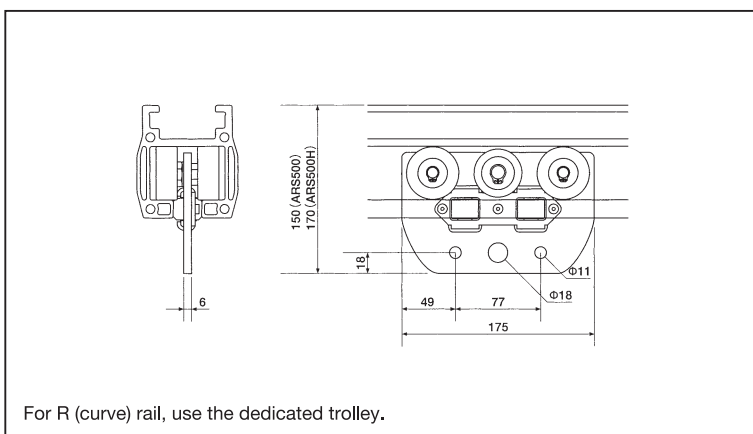


Name	Trolley	Model	ARS500-TR3A
-------------	---------	--------------	-------------



Standard type

Unit weight	1.3Kg
--------------------	-------



Name Trolley **Model** ARS500-TR4A

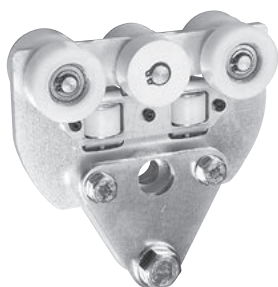
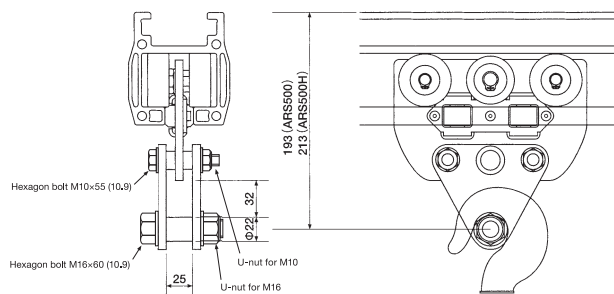


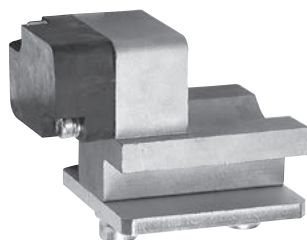
Plate type

Unit weight 2.1Kg



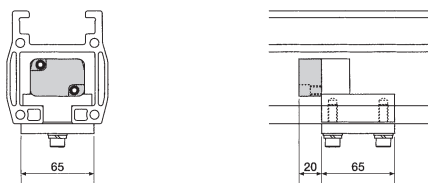
For R (curve) rail, use the dedicated trolley.

Name Middle stopper **Model** ARS500-MS2

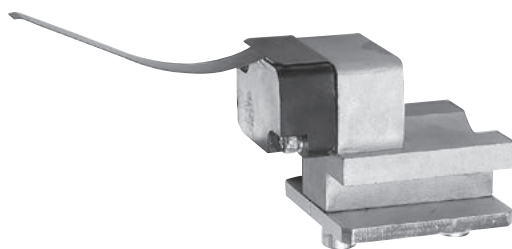


Standard type

Unit weight 0.9Kg

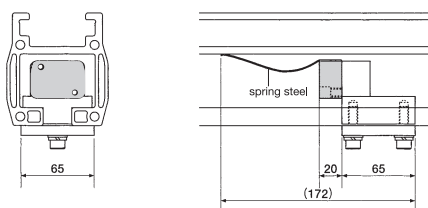


Name Middle stopper **Model** ARS500-MS3

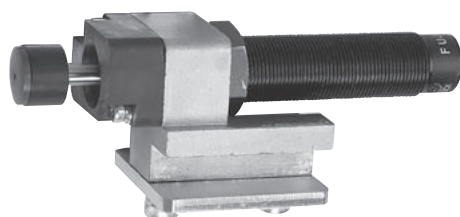


Brake type

Unit weight 0.9Kg

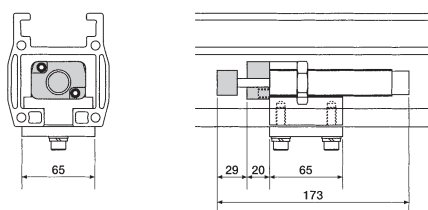


Name Middle stopper **Model** ARS500-MS4



Damper type

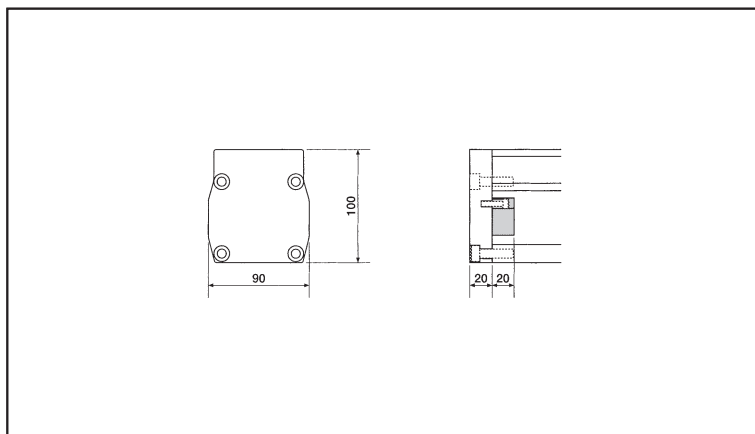
Unit weight 1.3Kg



Name	End cap	Model	ARS500-EC1
-------------	---------	--------------	------------



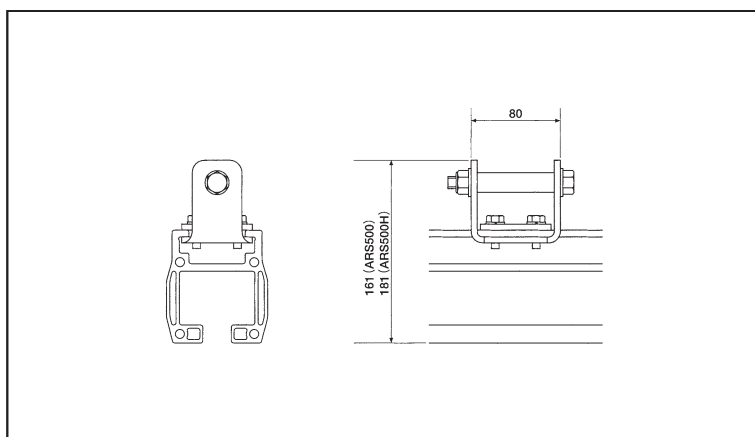
Unit weight	0.5Kg
--------------------	-------



Name	Safety bracket	Model	ARS500-SJ1
-------------	----------------	--------------	------------



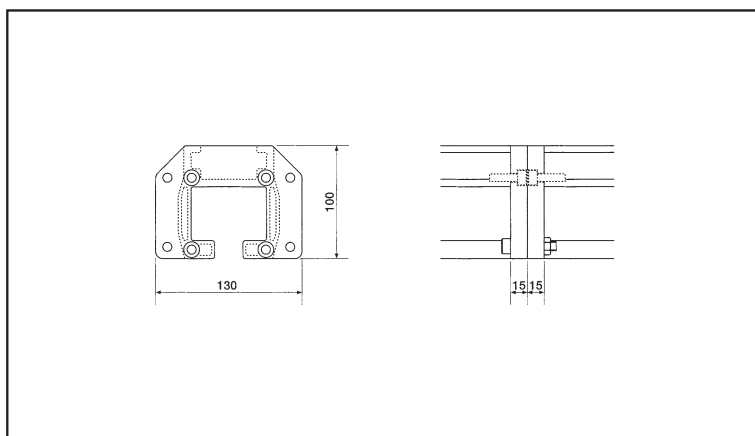
Unit weight	0.8Kg
--------------------	-------



Name	Connection kit	Model	ARS500-CN1A
-------------	----------------	--------------	-------------



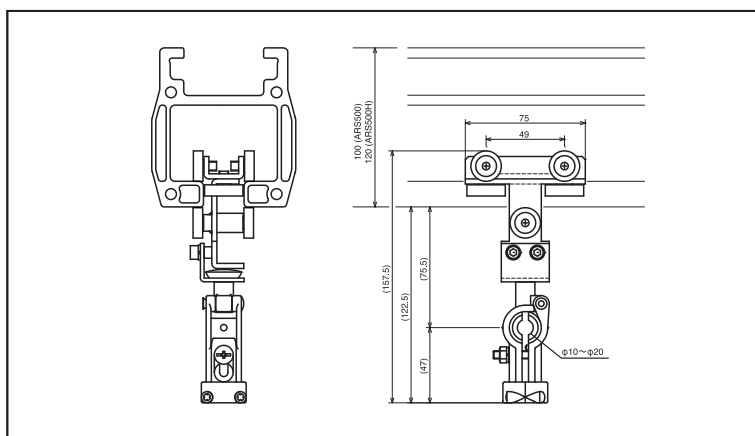
Unit weight	0.8Kg
--------------------	-------



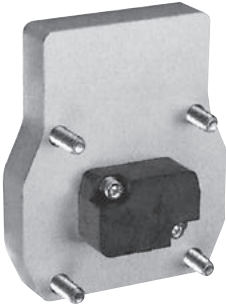
Name	Hose trolley	Model	ARS500-HT4
-------------	--------------	--------------	------------

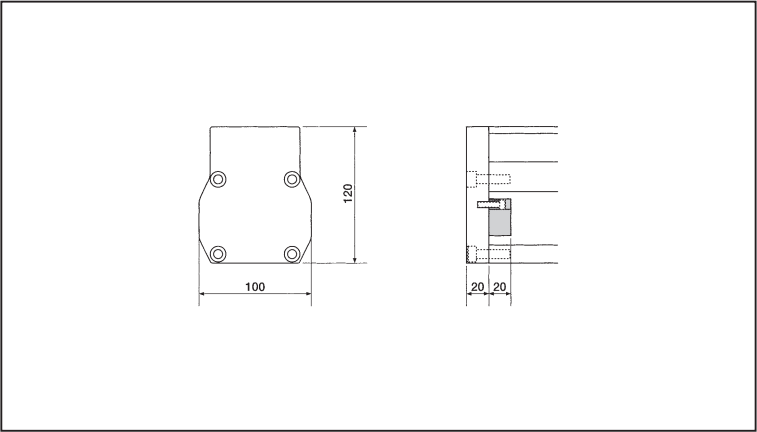


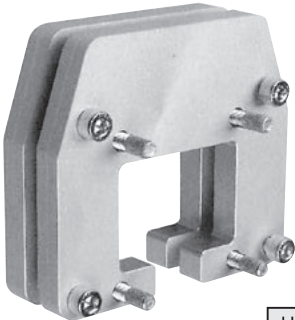
Unit weight	0.3Kg
--------------------	-------

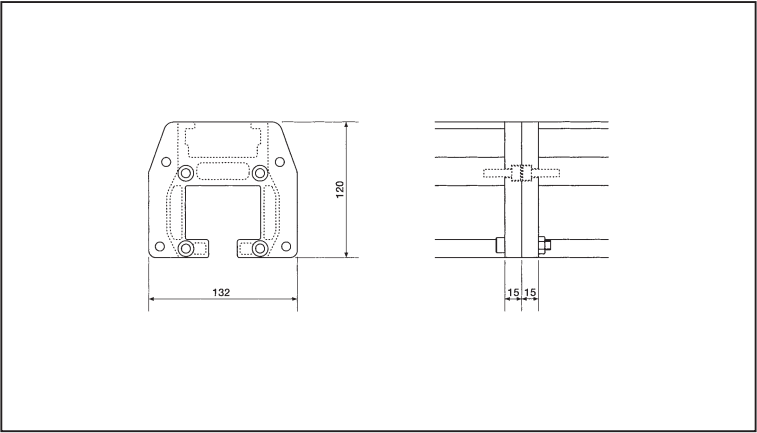


ARS500H Series

Name	End cap	Model	ARS500H-EC1
			
		Unit weight	0.6Kg

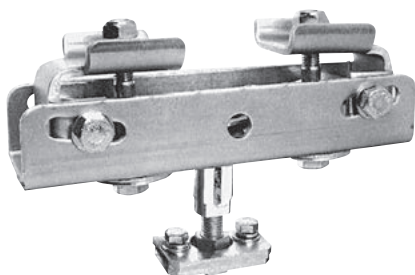


Name	Connection kit	Model	ARS500H-CN1
			
		Unit weight	1.1Kg



ARS200 Series

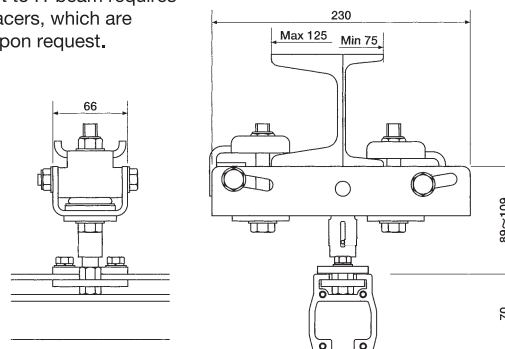
Name Hanger **Model** ARS200-HN1



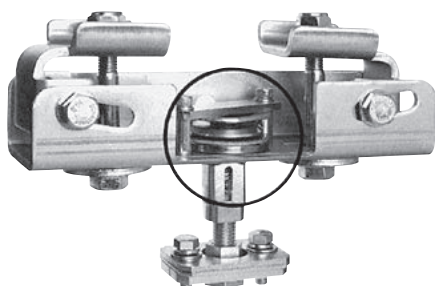
Standard type

Unit weight 2.8Kg

Attachment to H-beam requires hanger spacers, which are available upon request.



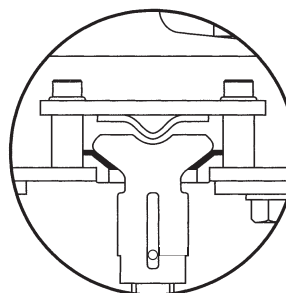
Name Hanger **Model** ARS200-HN1-F



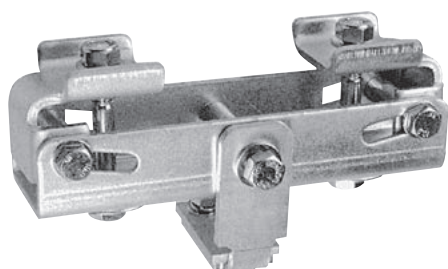
Standard lift-preventive type

Unit weight 2.9Kg

Attachment to H-beam requires hanger spacers, which are available upon request.



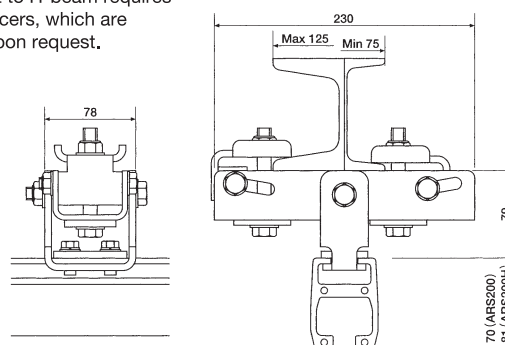
Name Hanger **Model** ARS200-HN2



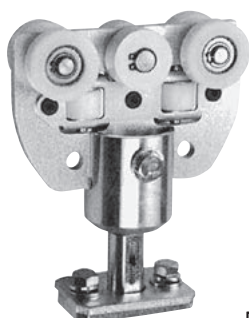
Parallel type

Unit weight 2.9Kg

Attachment to H-beam requires hanger spacers, which are available upon request.

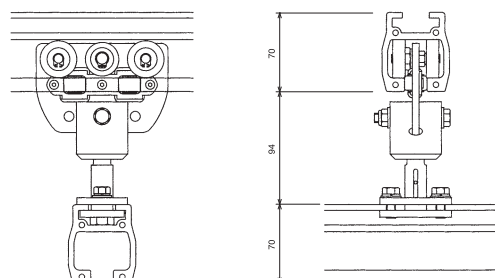


Name End track **Model** ARS200-ET5

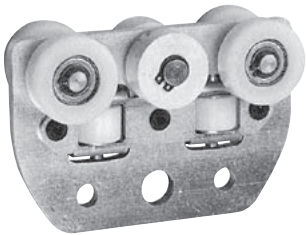


One-side hinge type

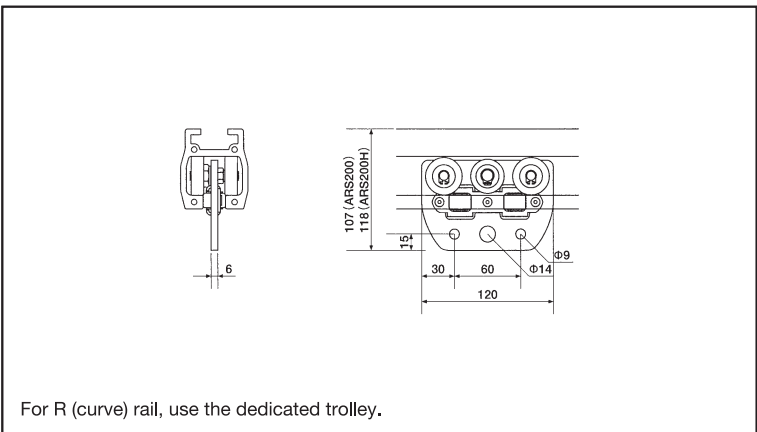
Unit weight 1.2Kg



Name	Trolley	Model	ARS200-TR3
-------------	---------	--------------	------------



Standard type	Unit weight	0.6Kg
---------------	-------------	-------



Name	Trolley	Model	ARS200-TR4
-------------	---------	--------------	------------

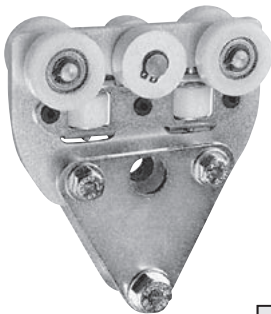
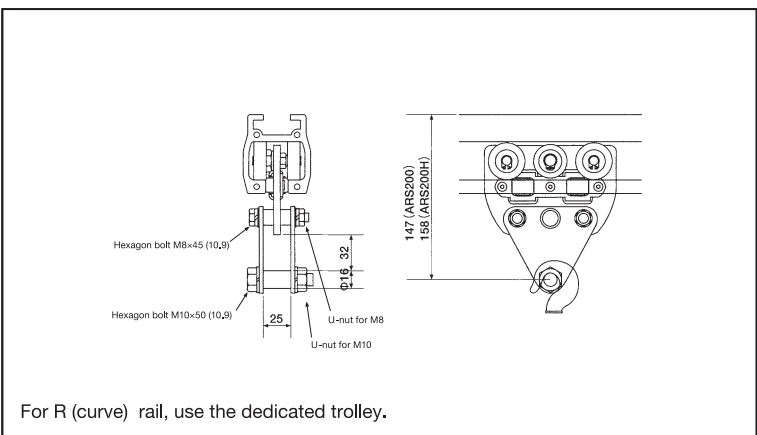


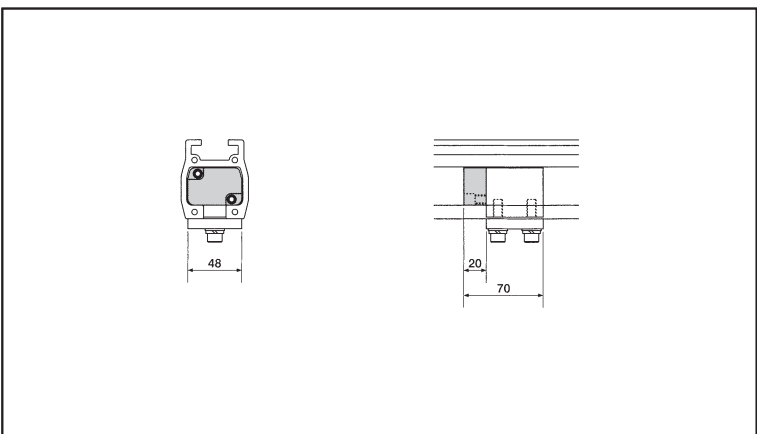
Plate type	Unit weight	0.9Kg
------------	-------------	-------



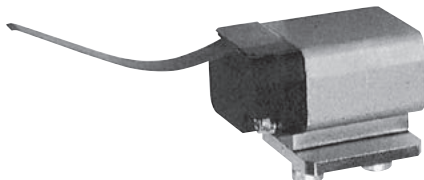
Name	Middle stopper	Model	ARS200-MS2
-------------	----------------	--------------	------------



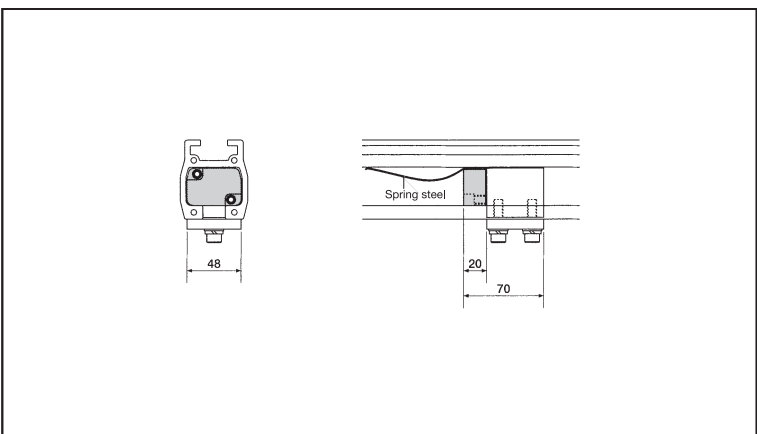
Standard type	Unit weight	0.7Kg
---------------	-------------	-------

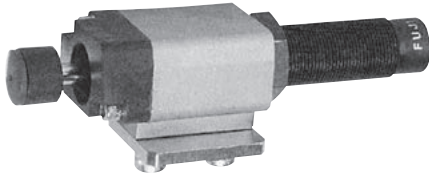


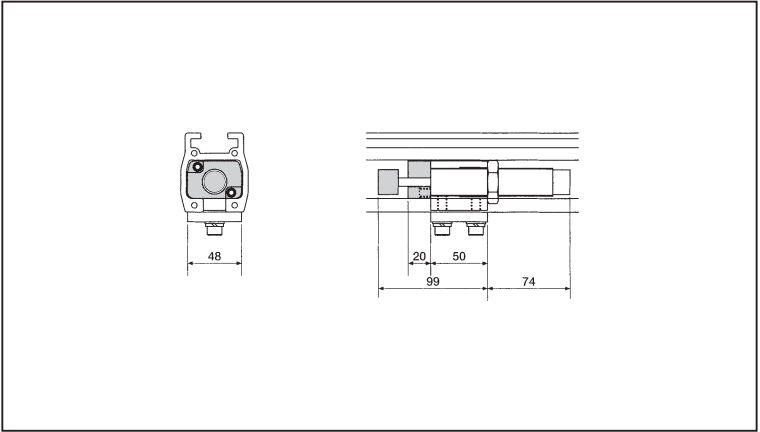
Name	Middle stopper	Model	ARS200-MS3
-------------	----------------	--------------	------------

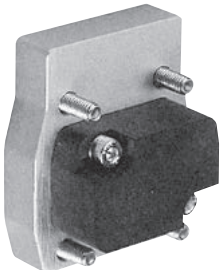


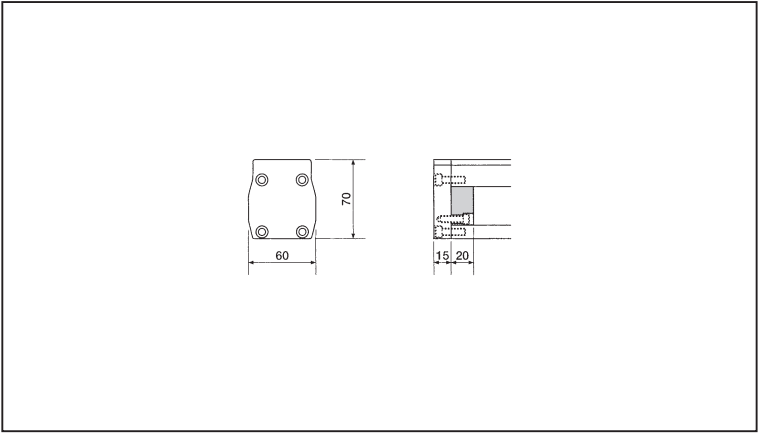
Brake type	Unit weight	0.7Kg
------------	-------------	-------

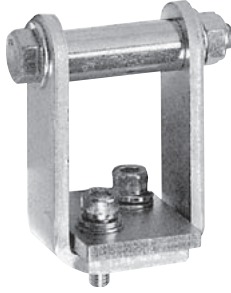


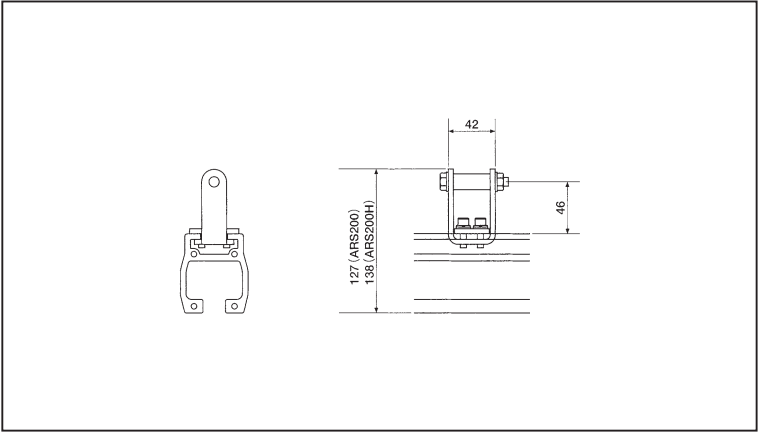
Name	Middle stopper	Model	ARS200-MS4
			
Damper type		Unit weight	1.0Kg

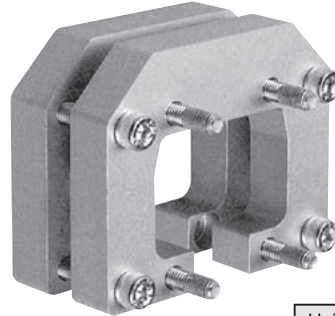


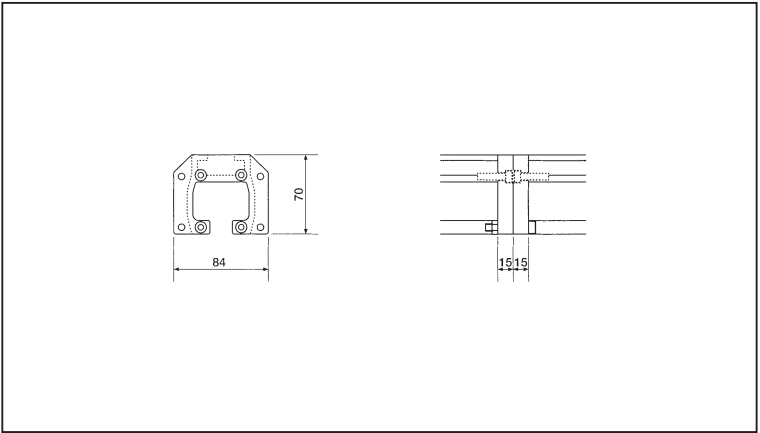
Name	End cap	Model	ARS200-EC1
			
		Unit weight	0.2Kg

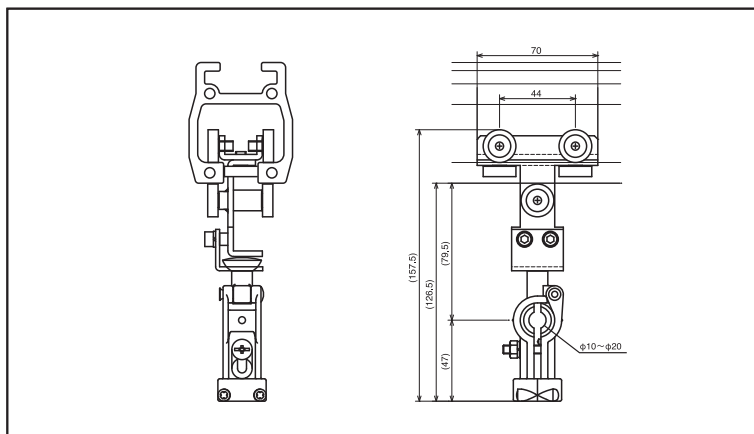


Name	Safety bracket	Model	ARS200-SJ1
			
		Unit weight	0.2Kg

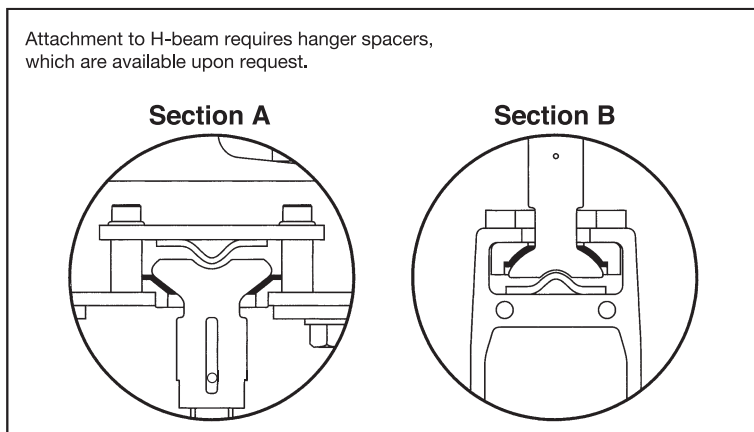
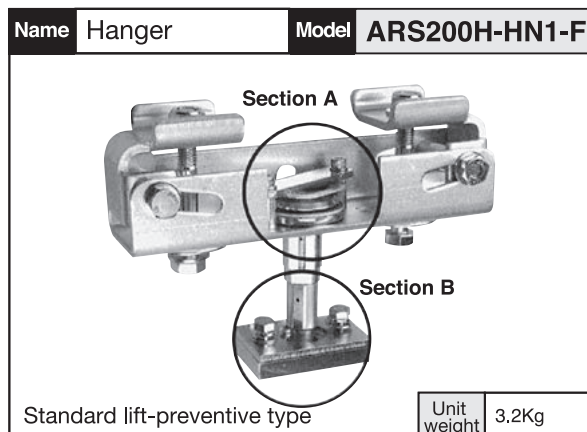
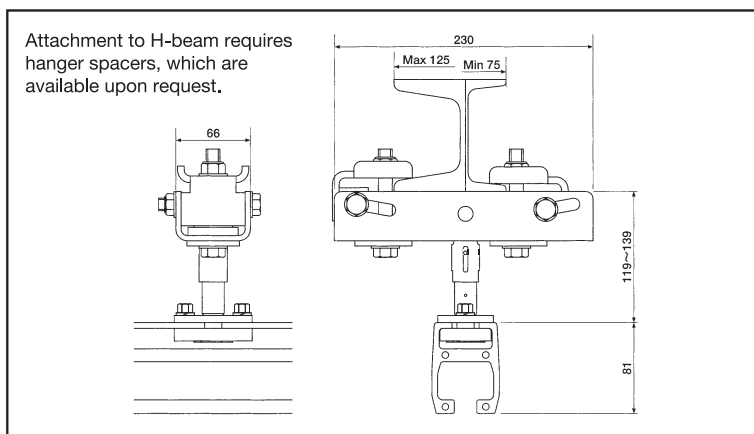
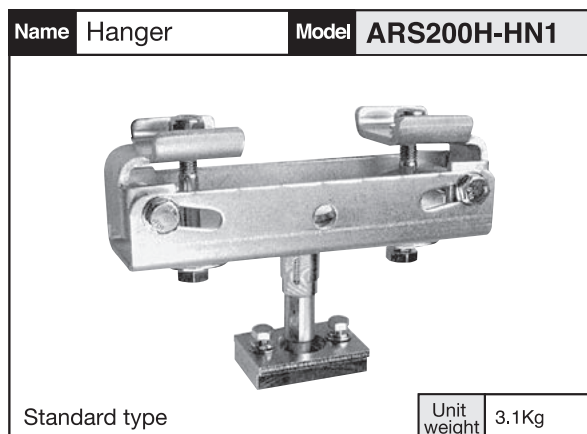


Name	Connection kit	Model	ARS200-CN1
			
		Unit weight	0.4Kg

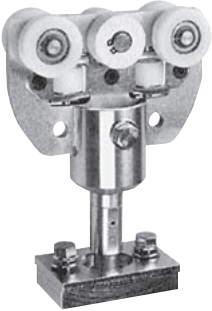




ARS200H Series

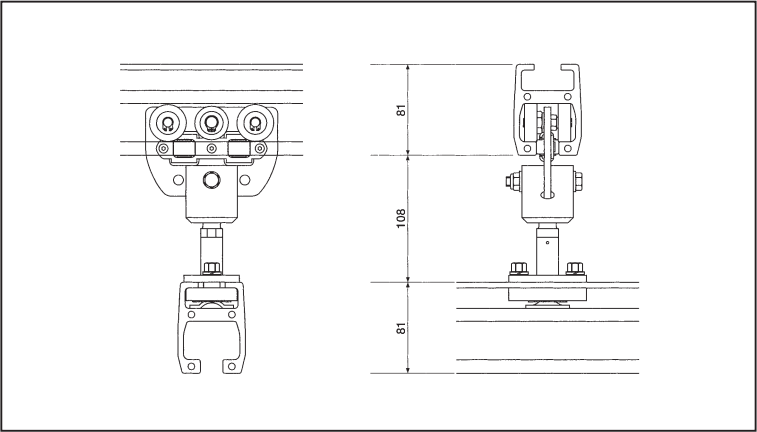


Name	End track	Model	ARS200H-ET4
------	-----------	-------	-------------

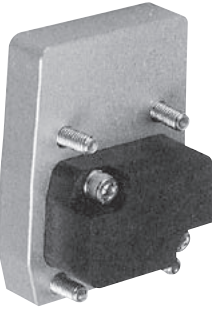


Both-side hinge type

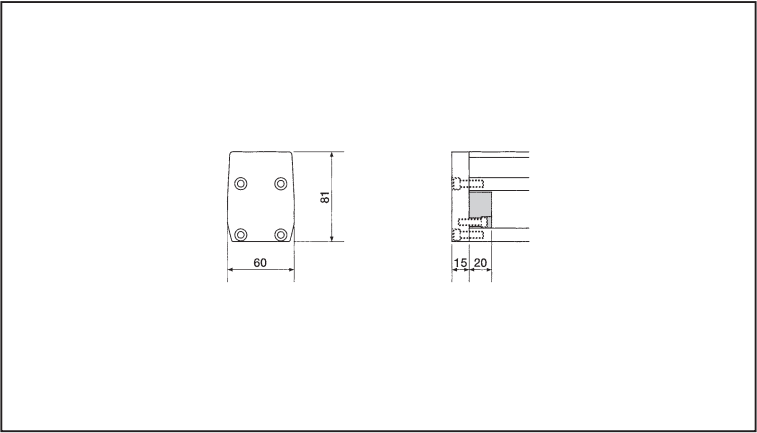
Unit weight	1.5Kg
-------------	-------



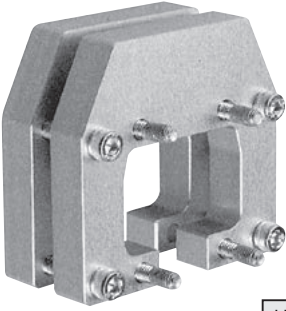
Name	End cap	Model	ARS200H-EC1
------	---------	-------	-------------



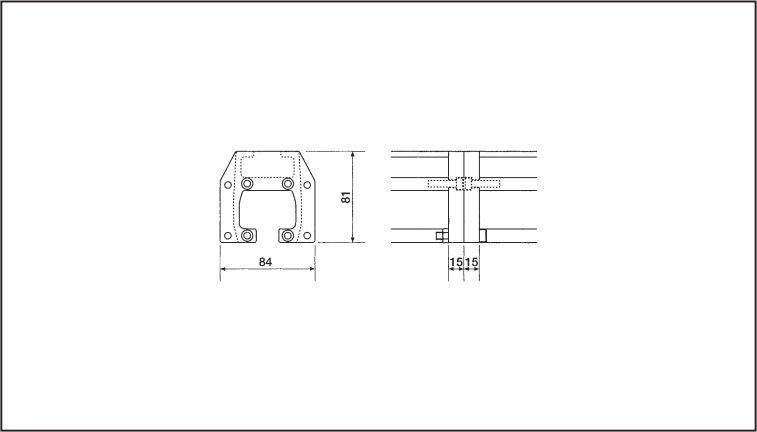
Unit weight	0.3Kg
-------------	-------



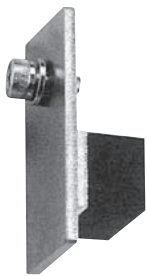
Name	Connection kit	Model	ARS200H-CN1
------	----------------	-------	-------------

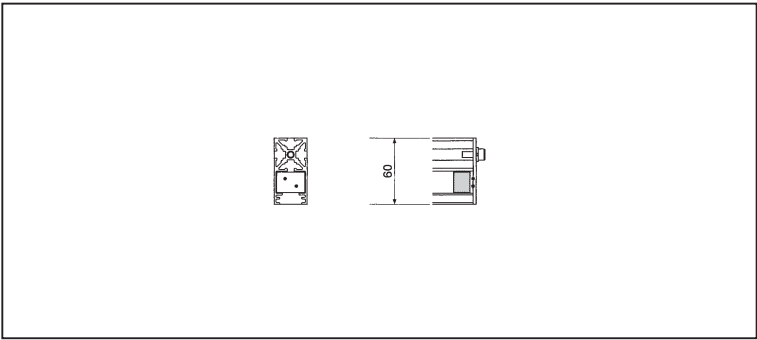



Unit weight	0.5Kg
-------------	-------

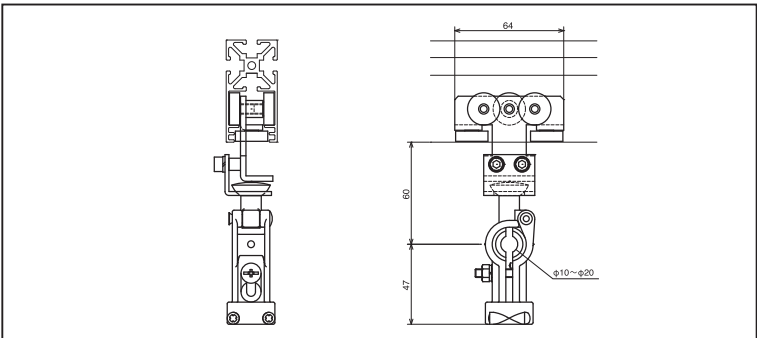


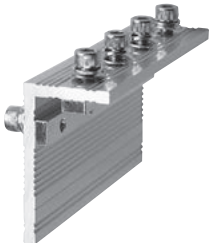
ARS050 Series

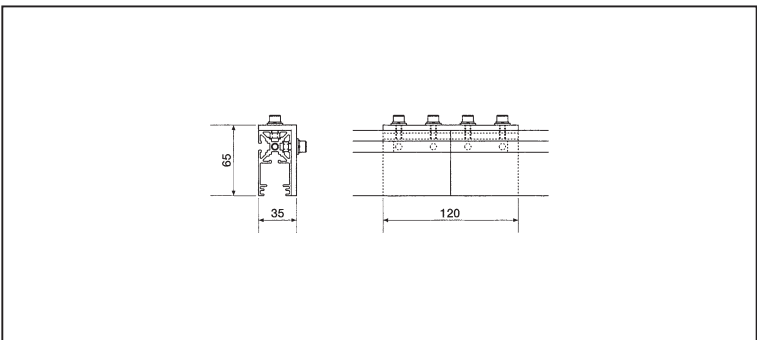
Name	End stopper	Model	ARS050-ES2
			
Unit weight		0.1Kg	




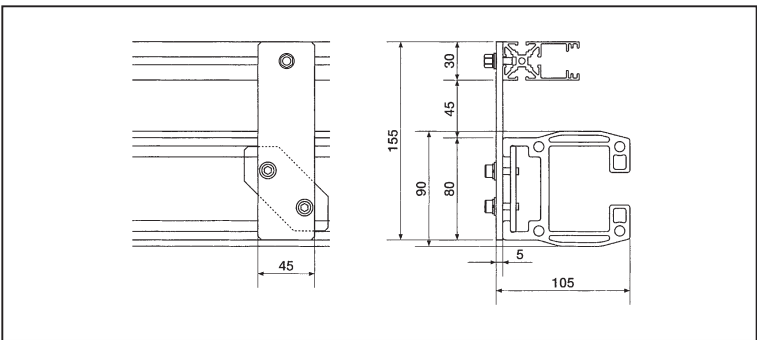
Name	Hose trolley	Model	ARS050-HT4
			
Unit weight		0.2Kg	

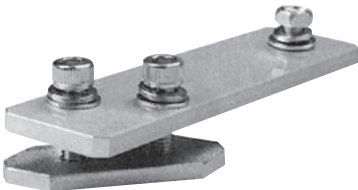


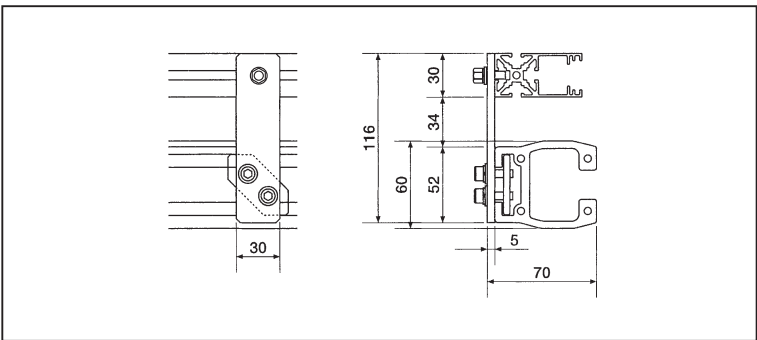
Name	Connection kit	Model	ARS050-CN1
			
Unit weight		0.3Kg	



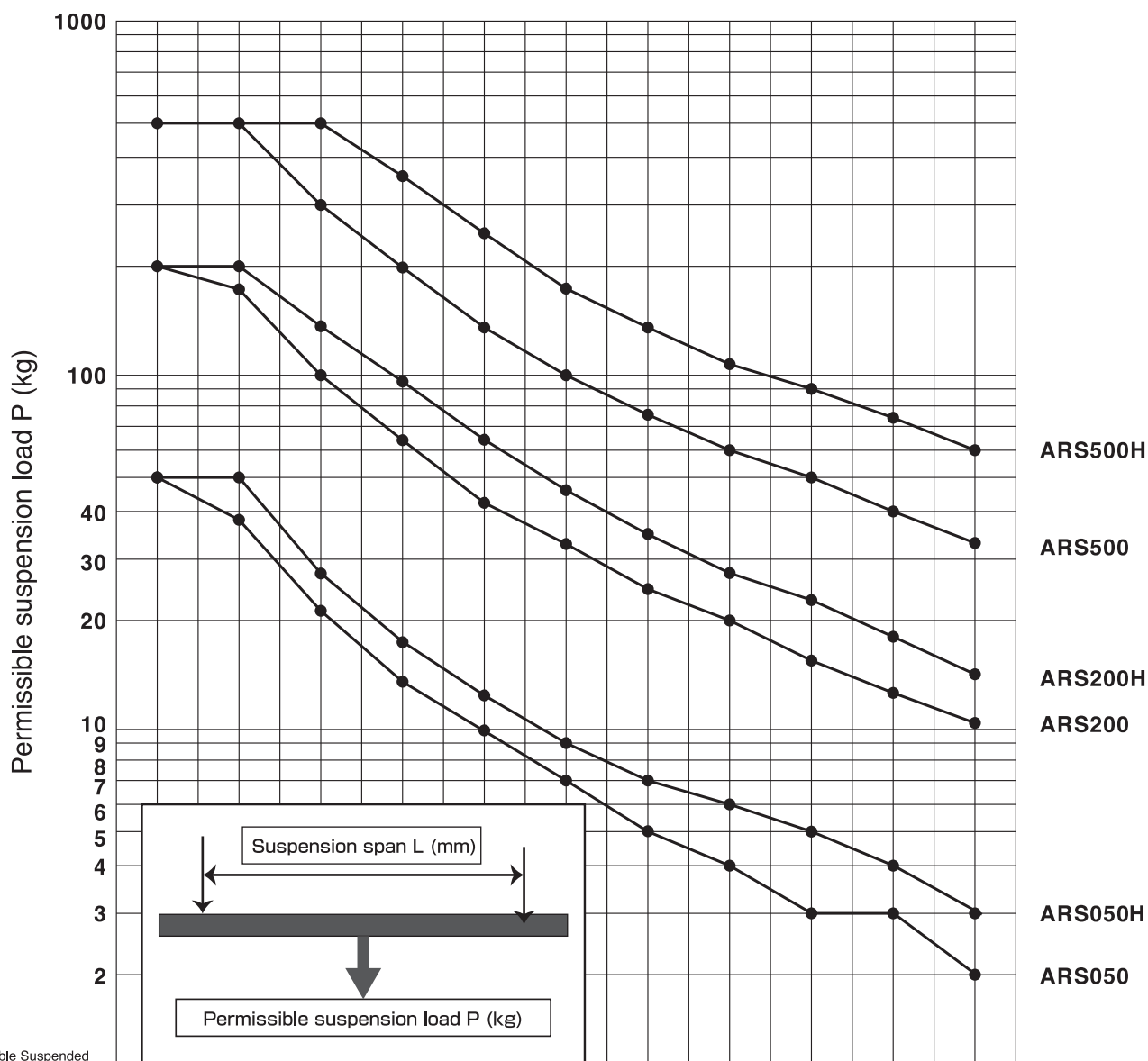
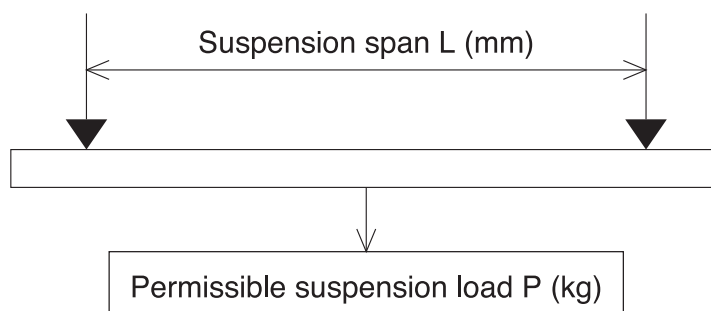
Name	Rail hanger	Model	ARS500-RH1
			
Unit weight		0.2Kg	



Name	Rail hanger	Model	ARS200-RH1
			
Unit weight		0.1Kg	



Relationship Between The Suspension Span And The Permissible Suspended Load



Permissible Suspended Load List (kg)

Type \ Suspension span L (mm)	1000	1500	2000	2500	3000	3500	4000	4500	5000	5500	6000
ARS500H	500	500	500	364	253	186	142	112	91	75	63
ARS500	500	500	310	199	138	101	78	61	50	41	34
ARS200H	200	200	147	94	65	48	37	29	24	19	16
ARS200	200	177	100	64	44	33	25	20	16	13	11
ARS050H	50	50	28	18	13	9	7	6	5	4	3
ARS050	50	38	21	14	10	7	5	4	3	3	2

■ For inquiry or request

■ Sales Outlets



15-13, Hayato, Hiroji-Cho, Showa-ku, Nagoya, Aichi, 466-0834 Japan
Tel: +81-52-832-6621 Fax: +81-52-832-2512
<https://www.toyotsu-tec.net/lp/alfarail/>

-
- The specifications of products which appear in this manual may be changed at any time without prior notice.
 - Actual product colors may vary slightly from the printed colors.
 - Do not use this products for applications other than those given in this catalog. Contact TOYOTSU TEC if the product is to be used for a different application.
 - Unauthorized excerption, copying, or reproduction of this manual content is prohibited.
 - The main components of the **ALFA RAIL SYSTEM**® are protected by industrial property rights, including utility model patents and design rights, etc.